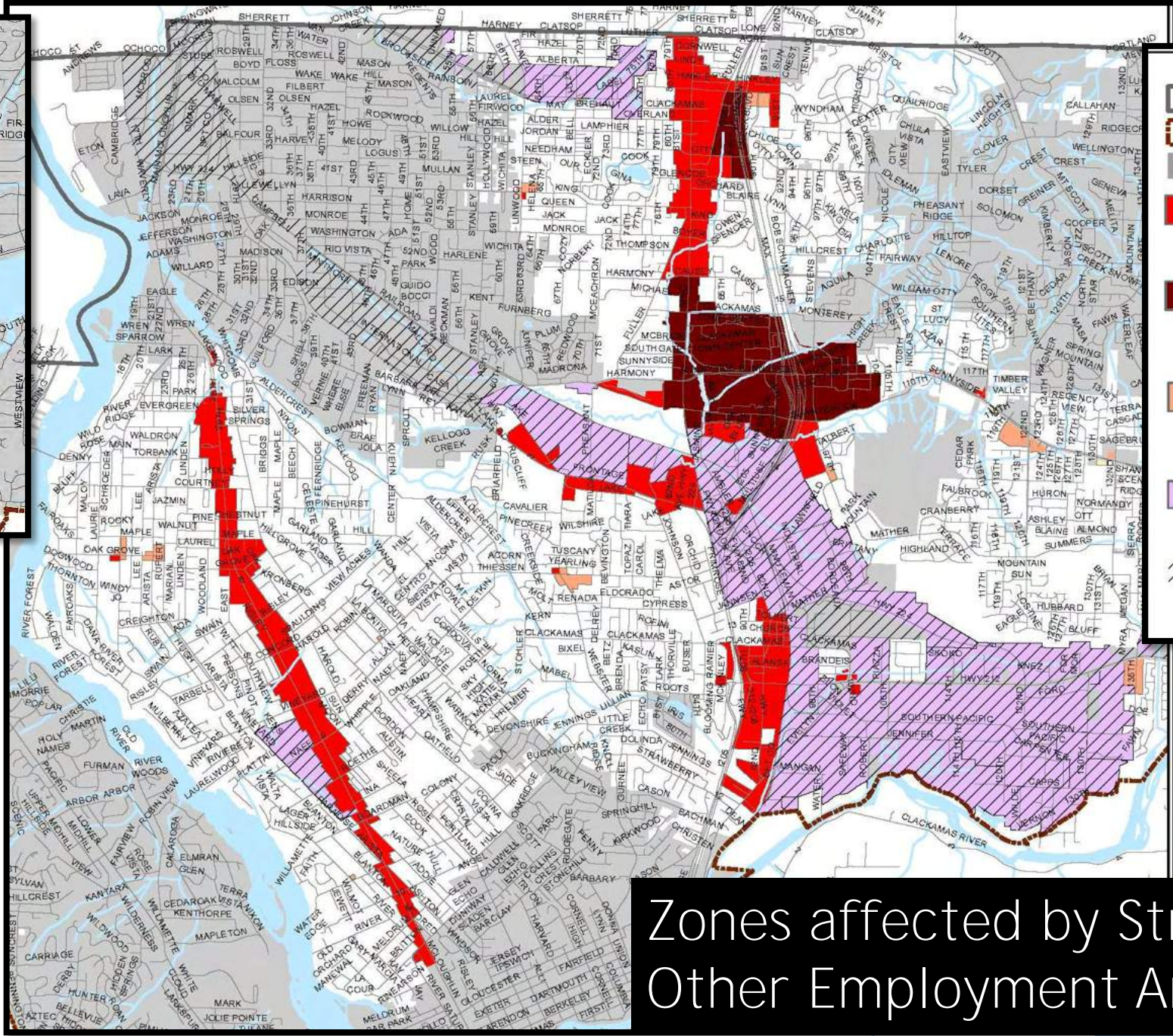
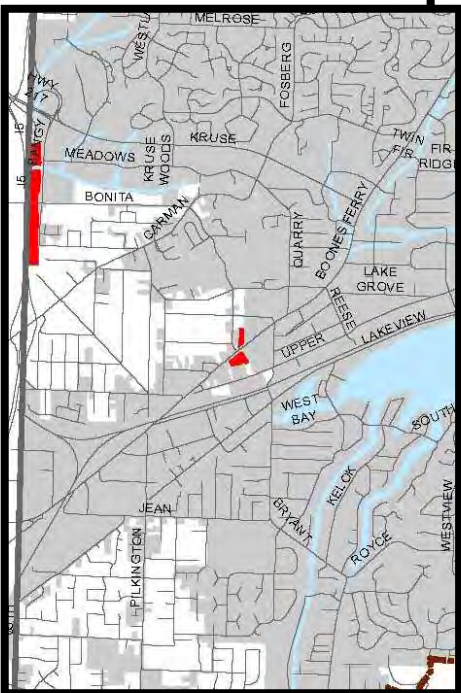


Zones Affected by Strategies 1 & 2

The information provided was derived from digital databases on Clackamas County's GIS. Although we strive to provide the best data we can, we sometimes use data developed by jurisdictions outside Clackamas County. Therefore, Clackamas County cannot accept any responsibility for any errors, omissions, positional accuracy, and therefore, there are no warranties which accompany this product. Although information from Land Surveys may have been used in the creation of this product, in no way does this product represent or constitute a Land Survey. Users are strongly cautioned to verify all information before making any decisions.





-  County line
-  Urban growth boundary (UGB)
-  Cities
-  Commercial areas affected by Phase 1 proposed housing DENSITY INCREASE
-  Other commercial areas that allow housing with NO MAX. DENSITY
-  Other commercial area where housing is NOT ALLOWED
-  Industrial areas where housing is NOT ALLOWED
-  Enterprise Zone Areas

The information provided was derived from digital databases on Clackamas County's GIS. Although we strive to provide the best data we can, we sometimes use data developed by jurisdictions outside Clackamas County. Therefore, Clackamas County cannot accept any responsibility for any errors, omissions, positional accuracy, and therefore, there are no warranties which accompany this product. Although information from Land Surveys may have been used in the creation of this product, in no way does its product represent or constitute a Land Survey. Users are strongly cautioned to verify all information before making any decisions.

# Zones affected by Strategy 3 and Other Employment Areas